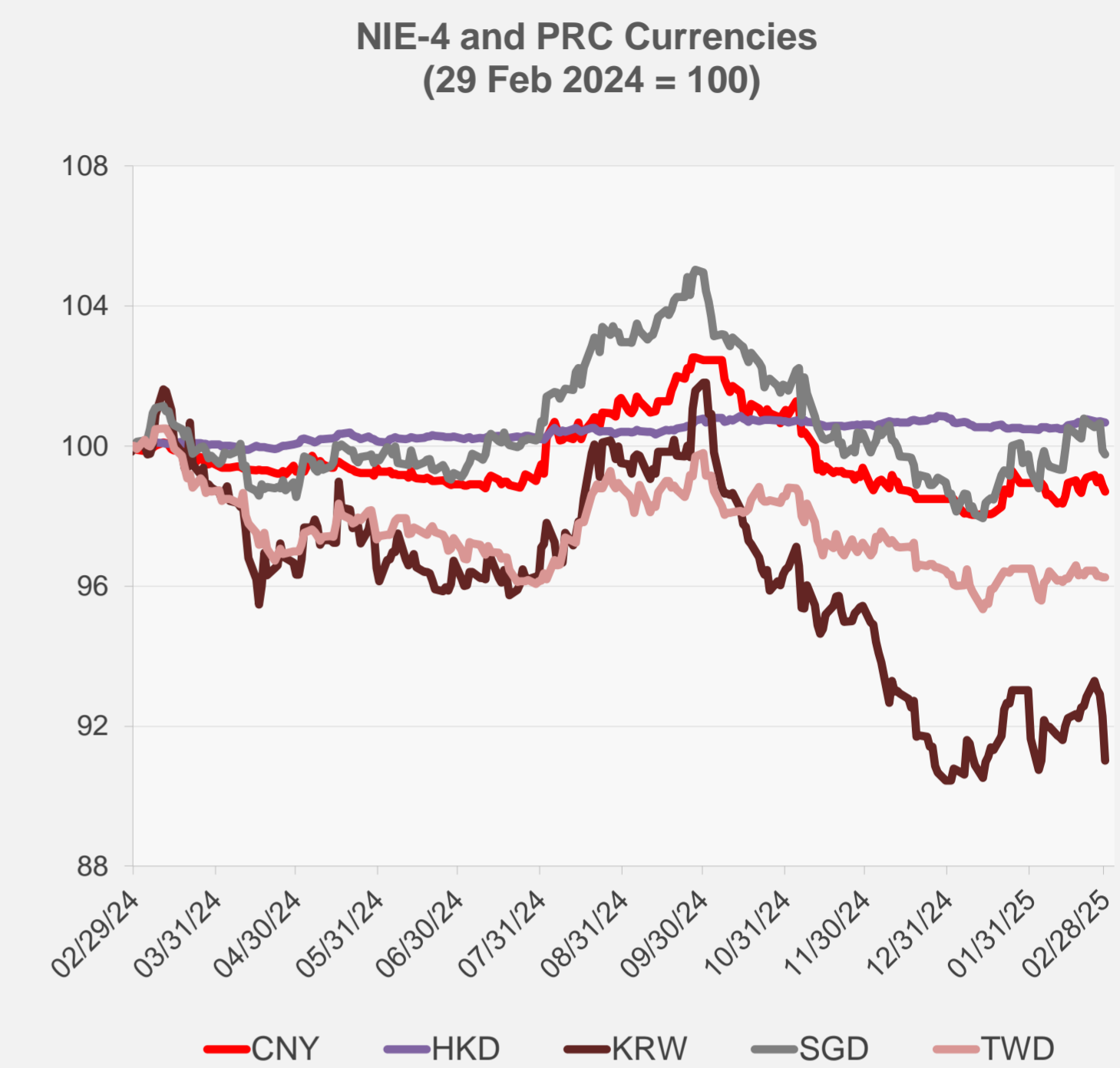
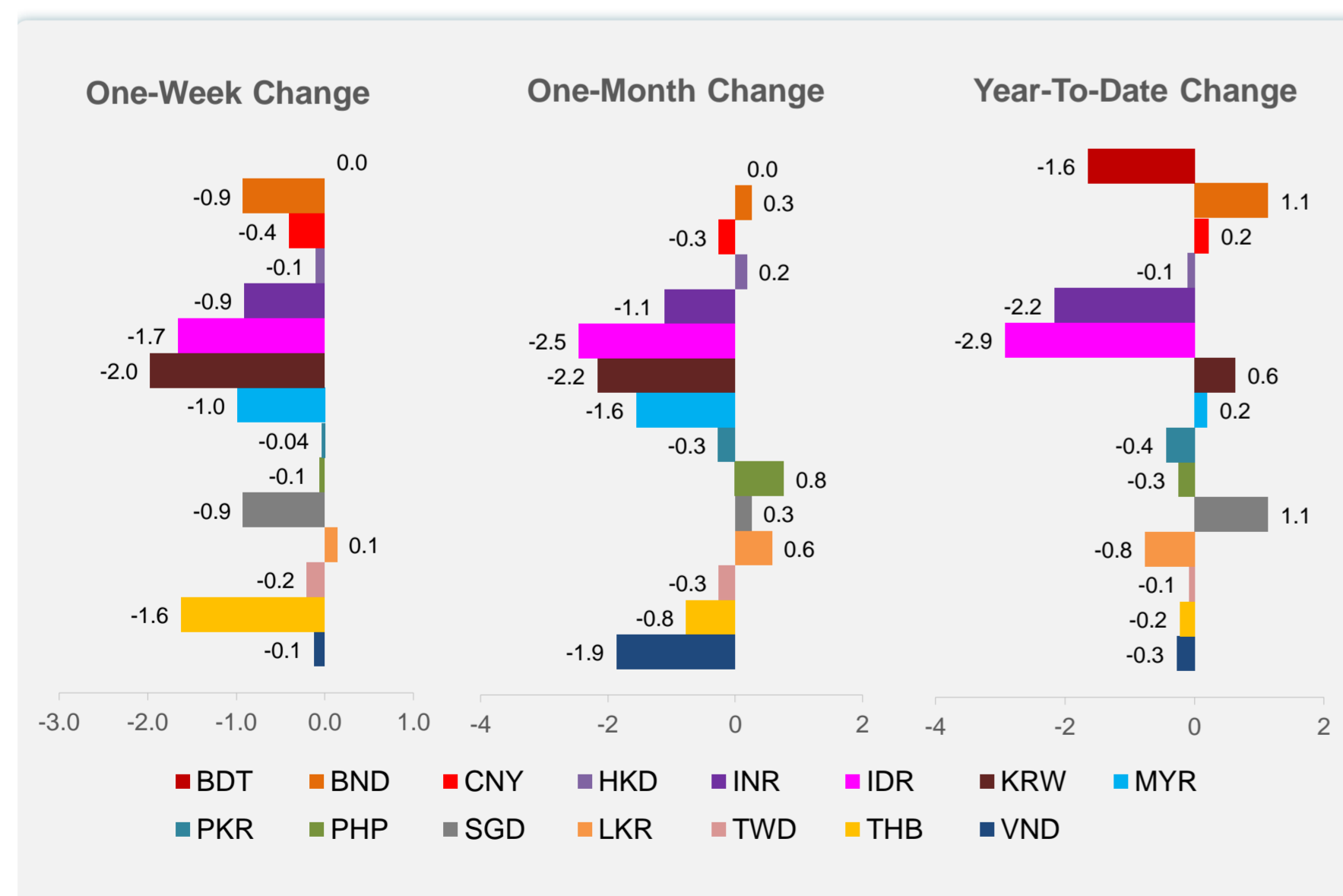
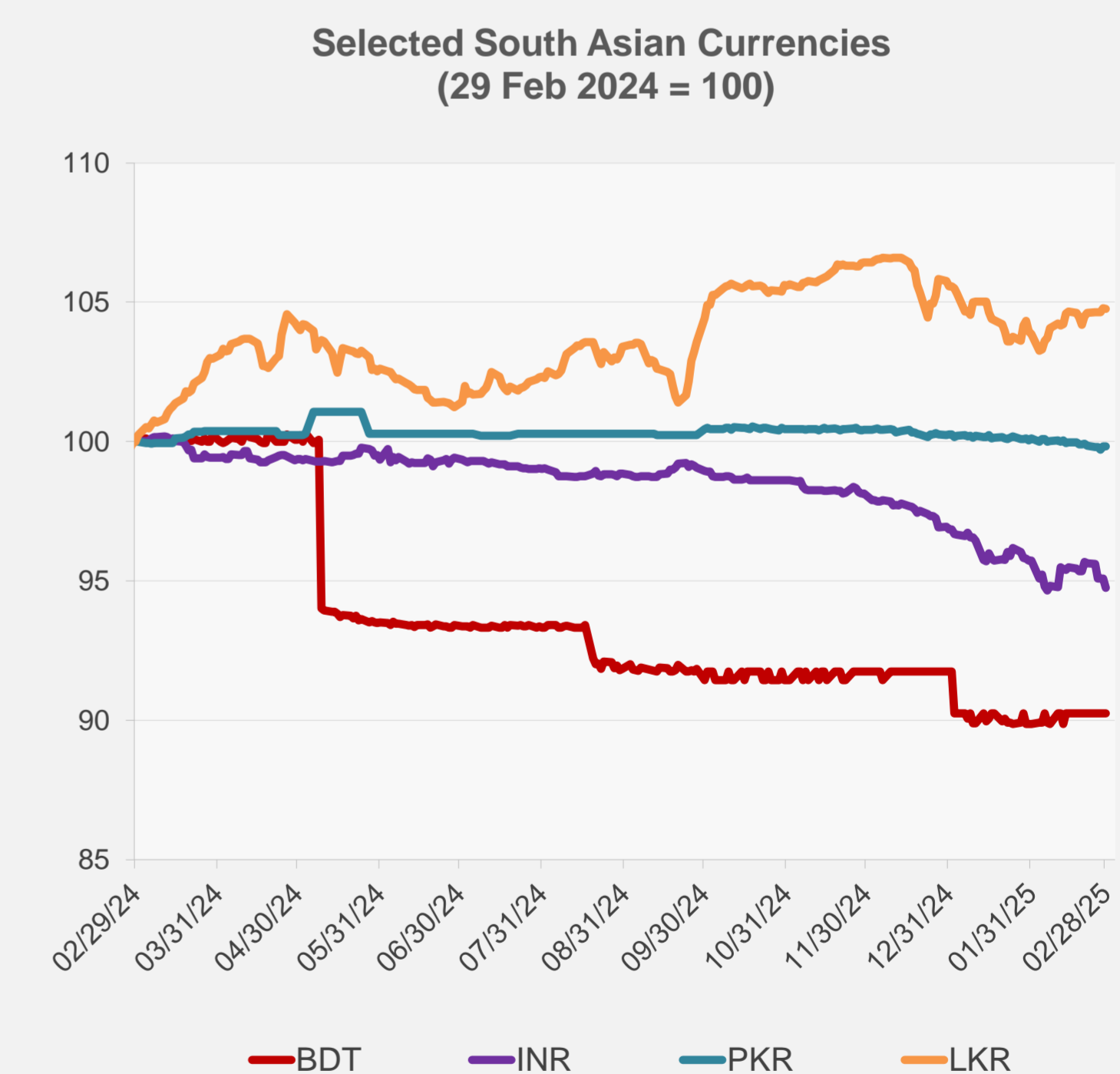
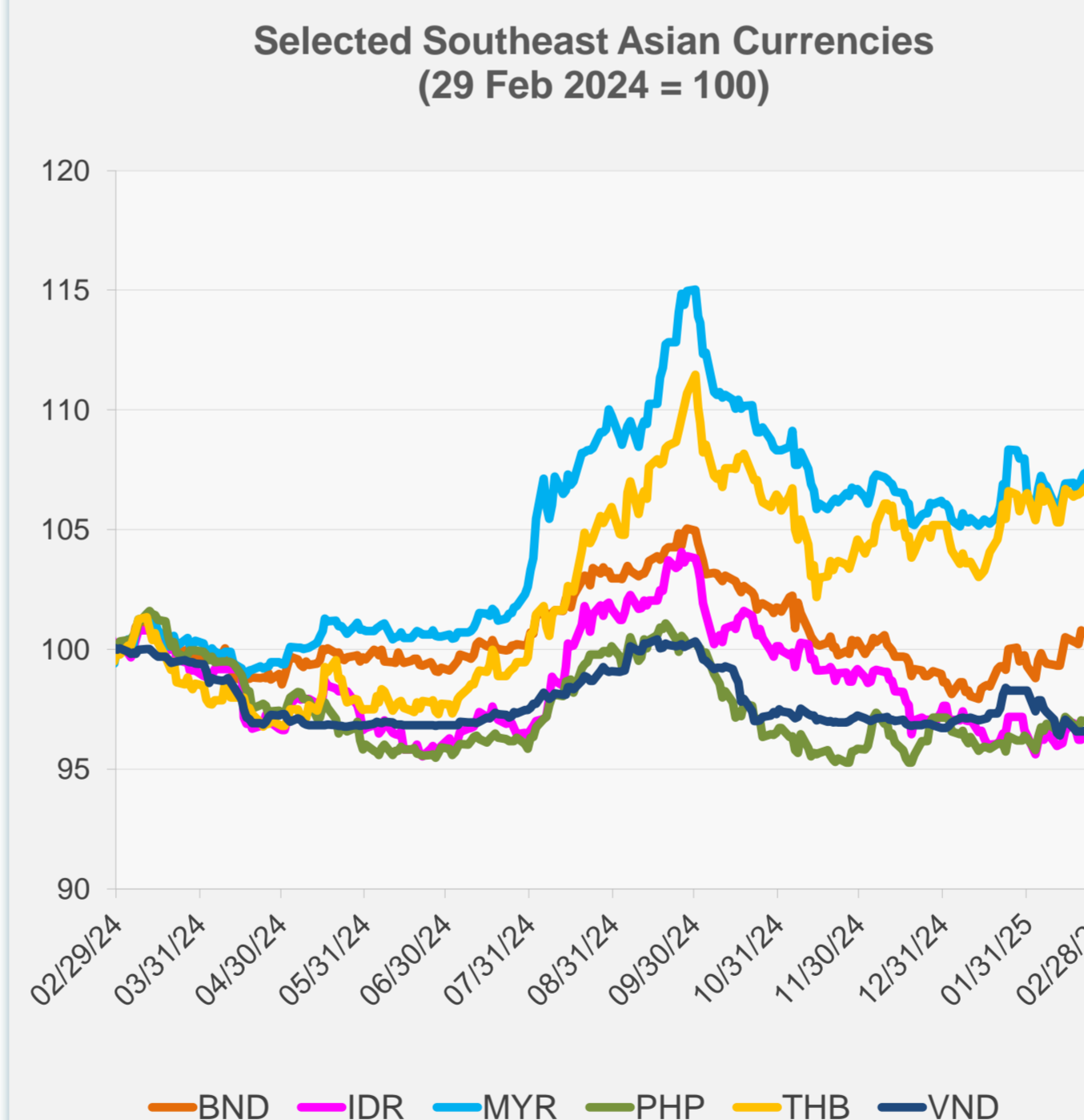


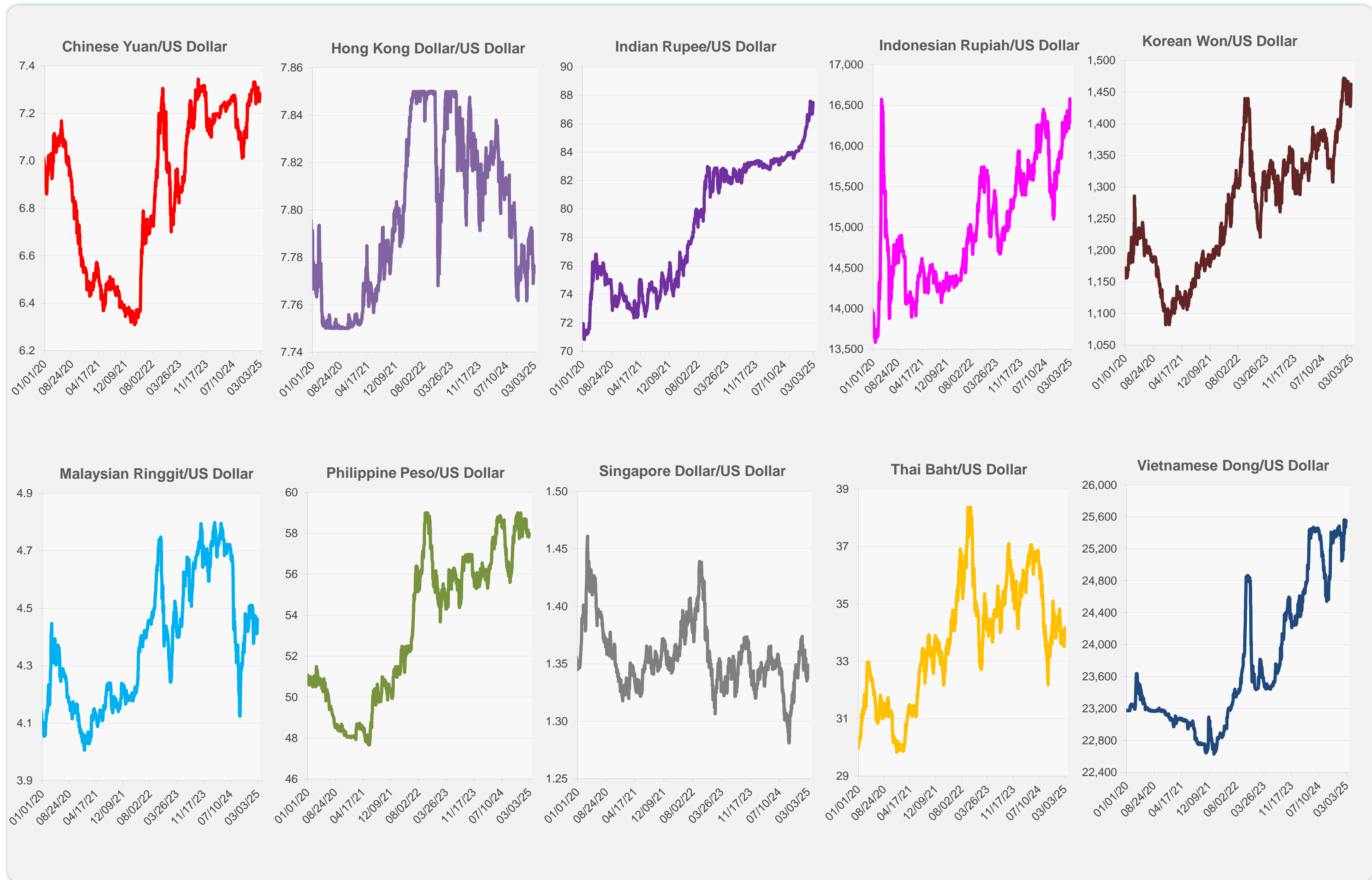
	Latest Closing	% change from Previous Day	% change from 01-Jan-25
Euro	0.96	-0.12	0.44
Japanese yen (JPY)	150.70	-0.48	4.29
Bangladeshi taka (BDT)	121.50	0.00	-1.65
Brunei dollar (BND)	1.35	-0.11	1.14
Chinese yuan (CNY)	7.28	-0.16	0.22
Hong Kong dollar (HKD)	7.78	-0.02	-0.11
Indian rupee (INR)	87.50	-0.35	-2.16
Indonesian rupiah (IDR)	16,580.00	-0.78	-2.93
Korean won (KRW)	1,462.90	-1.37	0.63
Malaysian ringgit (MYR)	4.46	-0.40	0.20
Pakistan rupee (PKR)	279.60	-0.01	-0.44
Philippine peso (PHP)	57.99	-0.18	-0.25
Singapore dollar (SGD)	1.35	-0.11	1.14
Sri Lanka rupee (LKR)	295.25	0.00	-0.76
Taipei,China NT dollar (TWD)	32.81	0.00	-0.09
Thai baht (THB)	34.17	-0.78	-0.23
Vietnamese dong (VND)	25,555.00	-0.10	-0.27



NIE = Newly Industrialized Economies



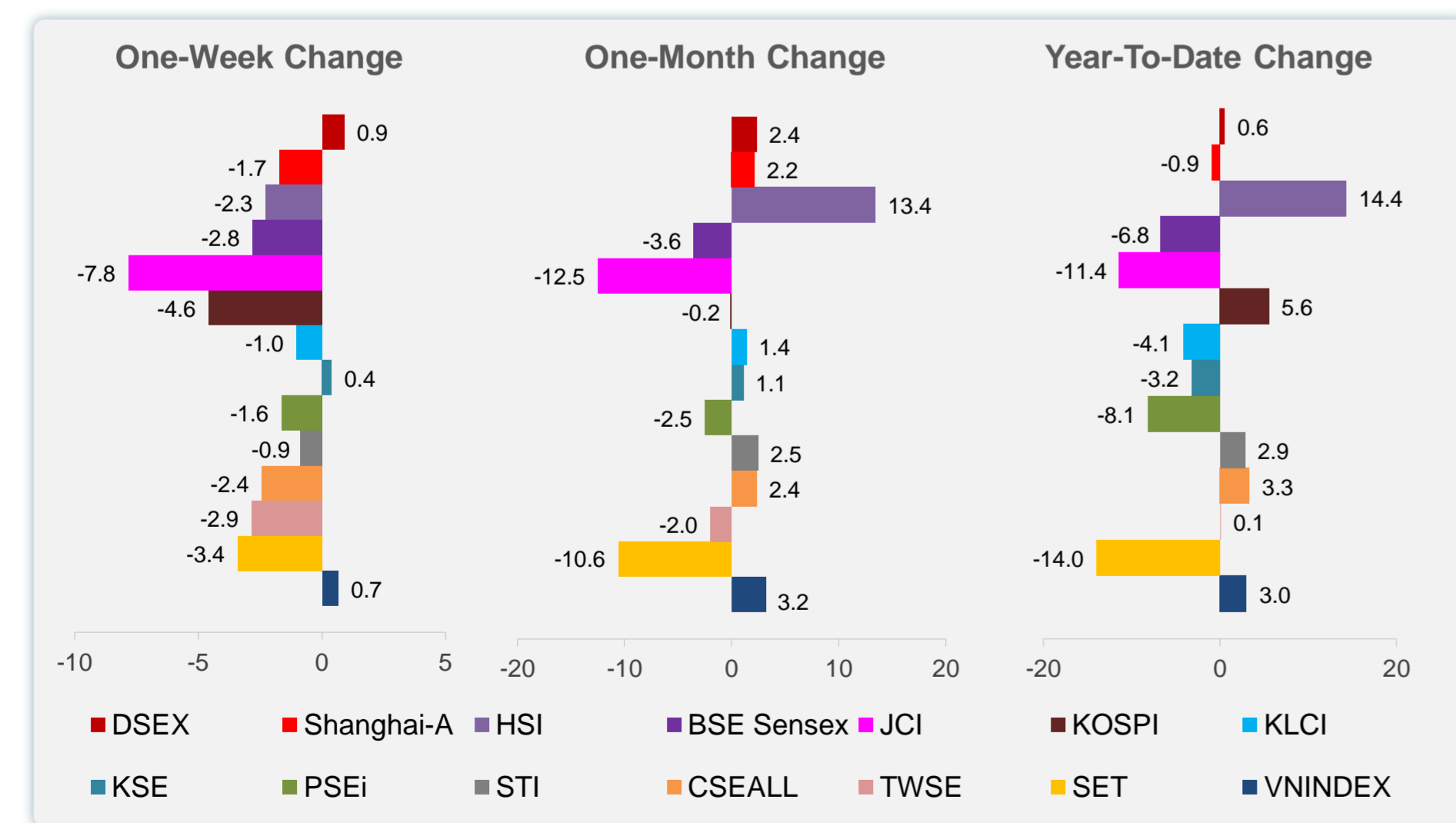
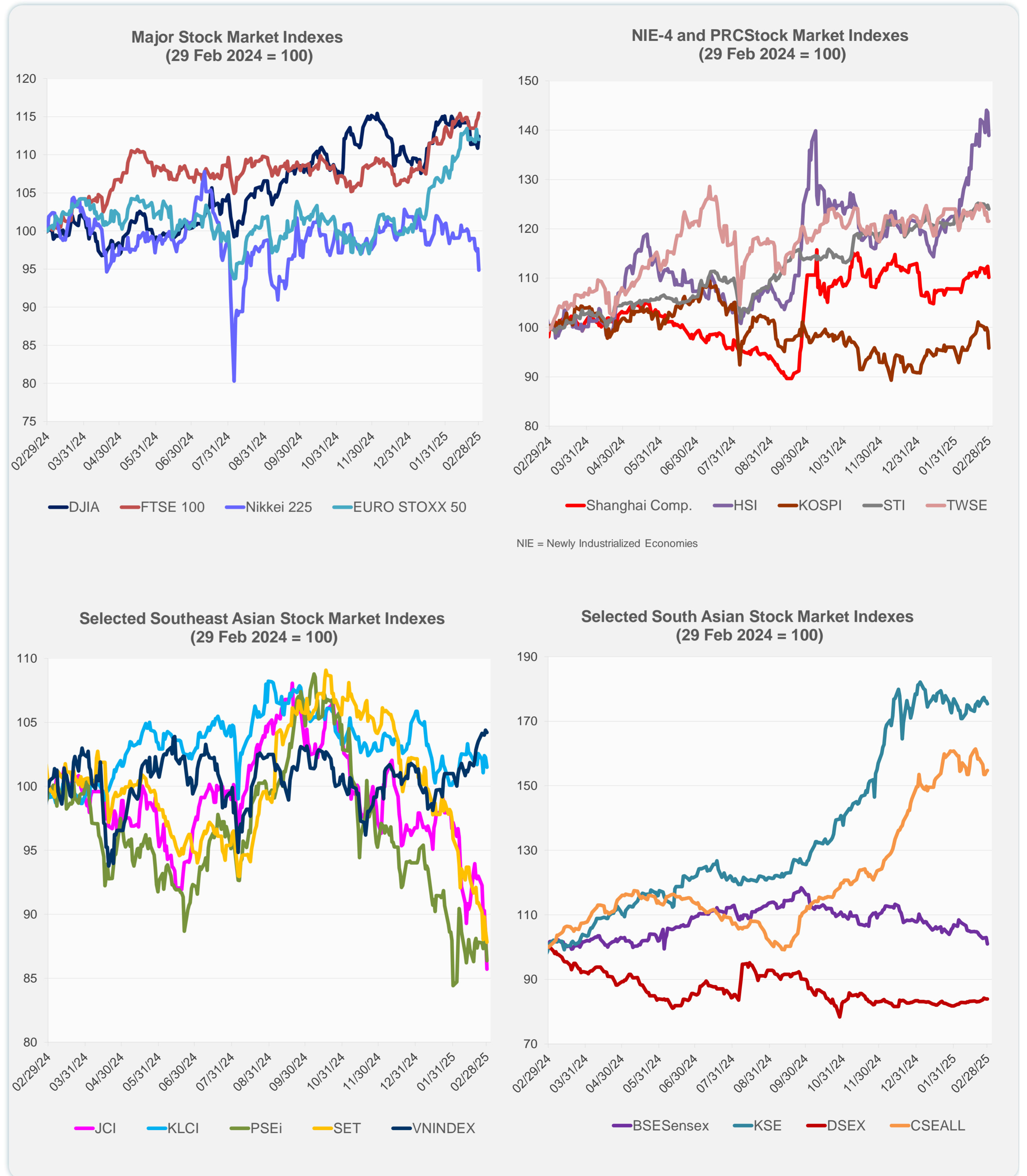
Note: Negative/Decreasing values indicate depreciation of local currency, and positive/increasing values indicate appreciation.
Source: ADB calculations using data from Haver Analytics.



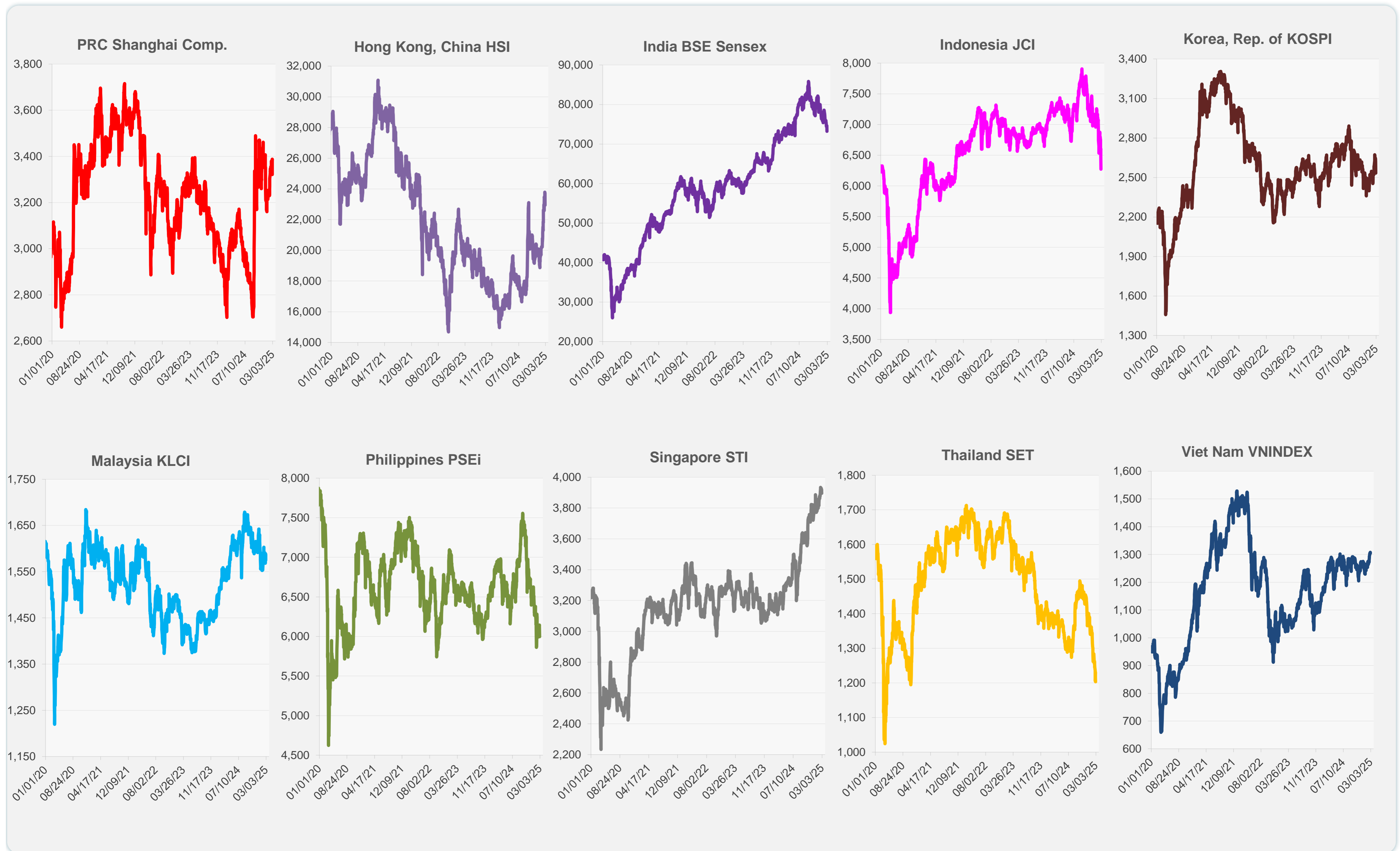
Source: Haver Analytics.

Daily Market Watch
STOCK INDEXES

	Latest Closing	% change from Previous Day	% change from 01-Jan-25
US Dow Jones Ind Avg	43,840.91	1.39	3.05
US NASDAQ	18,847.28	1.63	-2.40
US S&P 500	5,954.50	1.59	1.24
UK FTSE 100	8,809.74	0.61	7.79
EURO STOXX 50	5,463.54	-0.16	11.59
Japan NIKKEI 225	37,155.50	-2.88	-6.87
Bangladesh DSEX	5,247.30	0.00	0.56
PRC Shanghai Comp.	3,320.90	-1.98	-0.92
Hong Kong, China HSI	22,941.32	-3.28	14.36
India BSE Sensex	73,198.10	-1.90	-6.76
Indonesia JCI	6,270.60	-3.31	-11.43
Korea, Rep. of KOSPI	2,532.78	-3.39	5.55
Malaysia KLCI	1,574.70	-0.75	-4.12
Pakistan KSE 100	113,251.66	-0.47	-3.21
Philippines PSEi	5,997.97	-2.06	-8.13
Singapore STI	3,895.70	-0.65	2.85
Sri Lanka CSEALL	16,478.67	0.29	3.35
Taipei, China TWSE	23,053.18	0.00	0.08
Thailand SET	1,203.72	-0.99	-14.03
Viet Nam VNINDEX	1,305.36	-0.19	3.05



Sources: ADB calculations using data from CEIC Data Company and Haver Analytics.



Sources: CEIC Data Company and Haver Analytics.

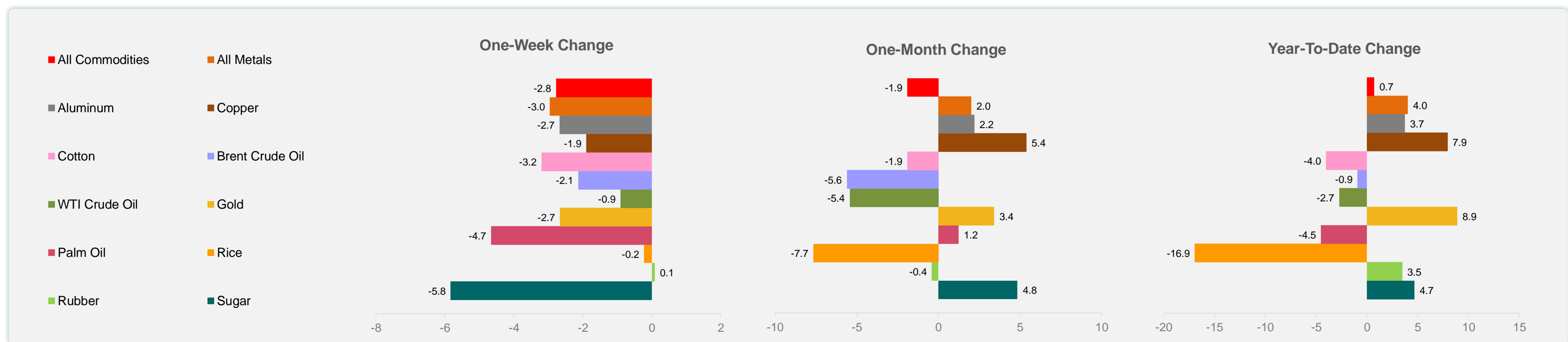
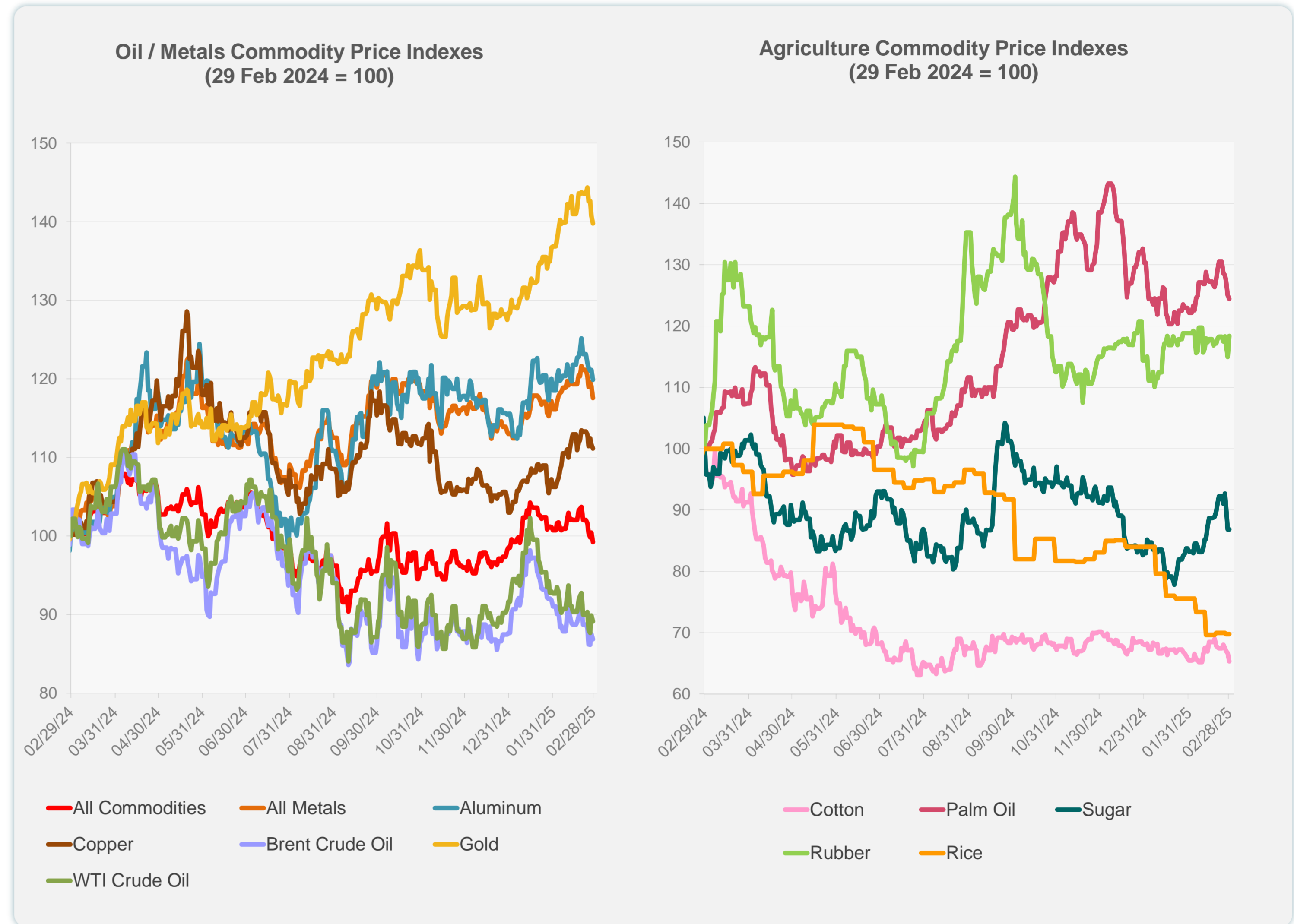
Daily Market Watch
COMMODITY PRICES

3 March 2025, 9:00 AM Manila

	Unit	Latest Closing	% change from Previous Day	% change from 01-Jan-25
S&P All Commodities	US\$	553.58	-1.19	0.72
S&P All Metals	US\$	319.76	-1.29	4.03
Aluminum	US\$/metric ton	2,621.06	-1.05	3.73
Copper	US\$/metric ton	9,338.06	-0.46	7.92
Cotton	US cents/lb	63.25	-2.09	-4.02
Brent Crude Oil	US\$/barrel	73.43	-0.74	-0.92
WTI Crude Oil	US\$/barrel	69.76	-0.84	-2.73
Gold	US\$/troy oz	2,857.83	-0.68	8.89
Palm Oil	US\$/metric tonne	1,050.42	-0.48	-4.52
Rice ¹	US\$/metric ton	446.00	0.00	-16.95
Rubber ²	US\$/kg	245.00	2.94	3.46
Sugar	US cents/lb	19.05	0.00	4.67

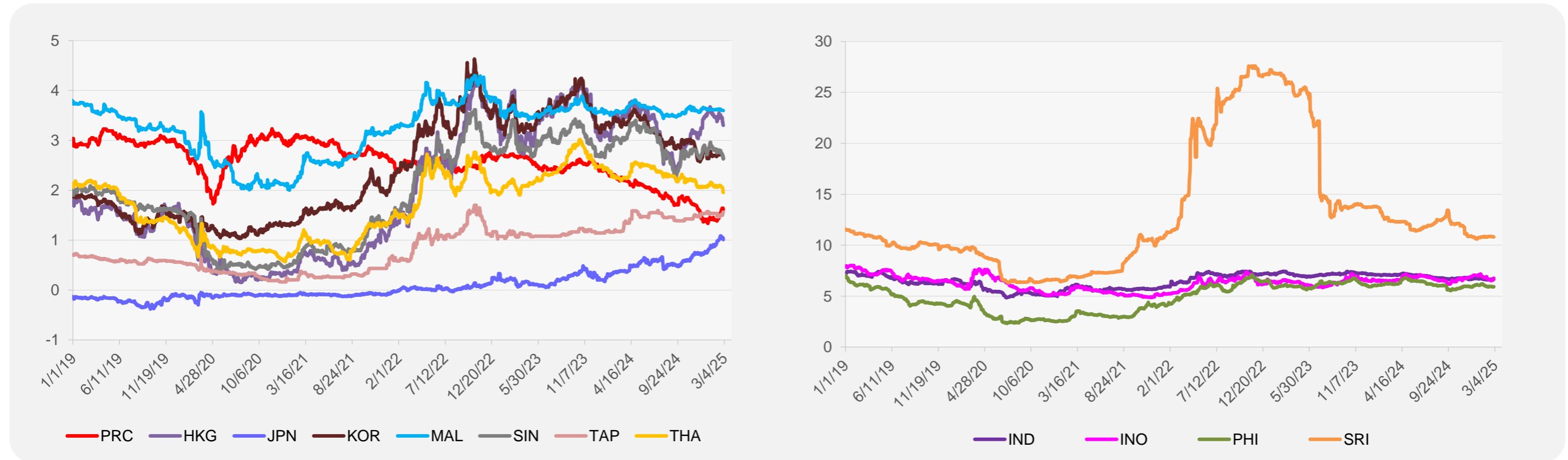
¹ Latest closing price from 26 February 2025.

² Singapore Exchange, Ribbed Smoked Sheet Rubber.

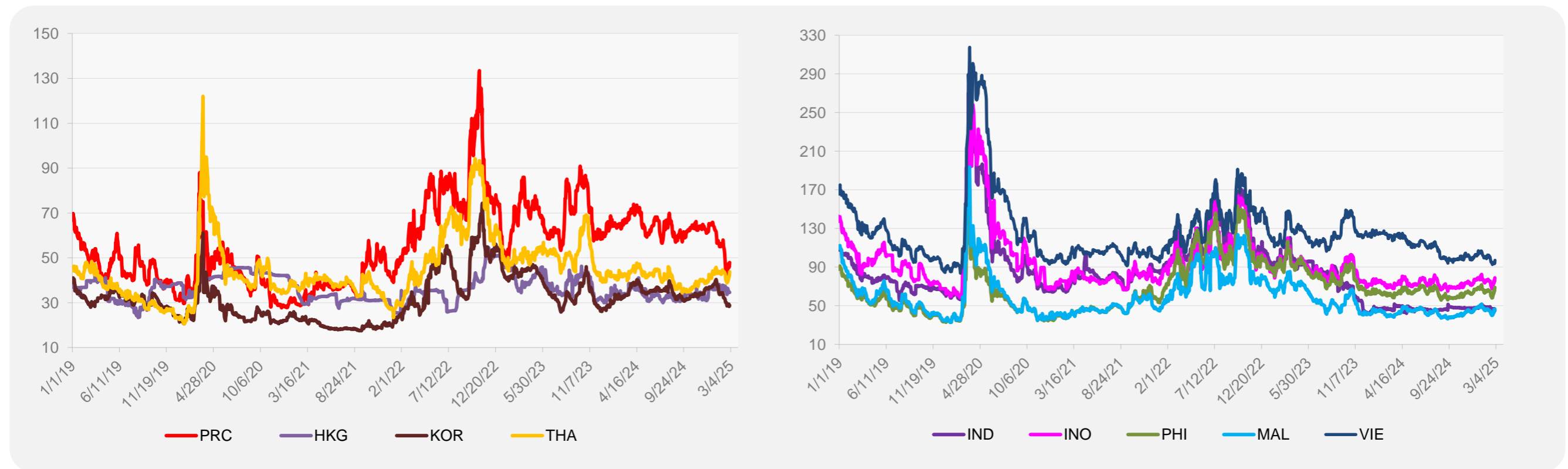


Source: ADB calculations using data from Bloomberg.

5-YEAR LOCAL CURRENCY GOVERNMENT BOND YIELDS (%)



5-YEAR CREDIT DEFAULT SWAP¹



¹ In USD and based on sovereign bonds.
Source: ADB calculations using data from Bloomberg.